

HIGHLIGHTS OF PRESCRIBING INFORMATION

These highlights do not include all the information needed to use LOTEMAX® SM safely and effectively. See full prescribing information for LOTEMAX® SM.

LOTEMAX® SM (loteprednol etabonate ophthalmic gel) 0.38%, for topical ophthalmic use

Initial U.S. Approval: 1998

INDICATIONS AND USAGE

LOTEMAX® SM is a corticosteroid indicated for the treatment of post-operative inflammation and pain following ocular surgery. (1)

DOSAGE AND ADMINISTRATION

Invert closed bottle and shake once to fill tip before instilling drops. (2)

Apply one drop of LOTEMAX® SM into the conjunctival sac of the affected eye three times daily beginning the day after surgery and continuing throughout the first 2 weeks of the post-operative period. (2)

DOSAGE FORMS AND STRENGTHS

LOTEMAX® SM is a sterile preserved ophthalmic gel containing 3.8 mg of loteprednol etabonate per gram of gel. (3)

CONTRAINDICATIONS

LOTEMAX® SM, as with other ophthalmic corticosteroids, is contraindicated in most viral diseases of the cornea and conjunctiva including epithelial herpes simplex keratitis (dendritic keratitis), vaccinia, and varicella, and also in mycobacterial infection of the eye and fungal diseases of ocular structures. (4)

WARNINGS AND PRECAUTIONS

- Intraocular pressure (IOP) increase - Prolonged use of corticosteroids may result in glaucoma with damage to the optic nerve, defects in visual acuity and fields of vision. If this product is used for 10 days or longer, IOP should be monitored. (5.1)

- Cataracts - Use of corticosteroids may result in posterior subcapsular cataract formation. (5.2)
- Delayed healing – The use of steroids after cataract surgery may delay healing and increase the incidence of bleb formation. In those diseases causing thinning of the cornea or sclera, perforations have been known to occur with the use of topical steroids. The initial prescription and renewal of the medication order should be made by a physician only after examination of the patient with the aid of magnification such as slit lamp biomicroscopy and, where appropriate, fluorescein staining. (5.3)
- Bacterial infections – Prolonged use of corticosteroids may suppress the host response and thus increase the hazard of secondary ocular infections. In acute purulent conditions, steroids may mask infection or enhance existing infection. (5.4)
- Viral infections – Employment of a corticosteroid medication in the treatment of patients with a history of herpes simplex requires great caution. Use of ocular steroids may prolong the course and may exacerbate the severity of many viral infections of the eye (including herpes simplex). (5.5)
- Fungal infections – Fungal infections of the cornea are particularly prone to develop coincidentally with long-term local steroid application. Fungus invasion must be considered in any persistent corneal ulceration where a steroid has been used or is in use. (5.6)

ADVERSE REACTIONS

There were no treatment-emergent adverse drug reactions that occurred in more than 1% of subjects in the three times daily group compared to vehicle. (6)

To report SUSPECTED ADVERSE REACTIONS, contact Bausch & Lomb Incorporated at 1-800-321-4576 or FDA at 1-800-FDA-1088 or www.fda.gov/medwatch.

See 17 for PATIENT COUNSELING INFORMATION.

Revised: 04/2020

FULL PRESCRIBING INFORMATION: CONTENTS*

1 INDICATIONS AND USAGE

2 DOSAGE AND ADMINISTRATION

3 DOSAGE FORMS AND STRENGTHS

4 CONTRAINDICATIONS

5 WARNINGS AND PRECAUTIONS

- 5.1 Intraocular Pressure (IOP) Increase
- 5.2 Cataracts
- 5.3 Delayed Healing
- 5.4 Bacterial Infections
- 5.5 Viral Infections
- 5.6 Fungal Infections
- 5.7 Contact Lens Wear

6 ADVERSE REACTIONS

8 USE IN SPECIFIC POPULATIONS

- 8.1 Pregnancy
- 8.2 Lactation
- 8.4 Pediatric Use
- 8.5 Geriatric Use

11 DESCRIPTION

12 CLINICAL PHARMACOLOGY

- 12.1 Mechanism of Action
- 12.3 Pharmacokinetics

13 NONCLINICAL TOXICOLOGY

- 13.1 Carcinogenesis, Mutagenesis, Impairment of Fertility

14 CLINICAL STUDIES

16 HOW SUPPLIED/STORAGE AND HANDLING

17 PATIENT COUNSELING INFORMATION

*Sections or subsections omitted from the full prescribing information are not listed.

FULL PRESCRIBING INFORMATION

1 INDICATIONS AND USAGE

LOTEMAX® SM (loteprednol etabonate ophthalmic gel) 0.38% is a corticosteroid indicated for the treatment of post-operative inflammation and pain following ocular surgery.

2 DOSAGE AND ADMINISTRATION

Invert closed bottle and shake once to fill tip before instilling drops. Apply one drop of LOTEMAX® SM into the conjunctival sac of the affected eye three times daily beginning the day after surgery and continuing throughout the first 2 weeks of the post-operative period.

3 DOSAGE FORMS AND STRENGTHS

LOTEMAX® SM (loteprednol etabonate ophthalmic gel) 0.38% is a sterile preserved ophthalmic gel containing 3.8 mg of loteprednol etabonate per gram of gel.

4 CONTRAINDICATIONS

LOTEMAX® SM, as with other ophthalmic corticosteroids, is contraindicated in most viral diseases of the cornea and conjunctiva including epithelial herpes simplex keratitis (dendritic keratitis), vaccinia, and varicella, in mycobacterial infection of the eye and fungal diseases of ocular structures.

5 WARNINGS AND PRECAUTIONS

5.1 Intraocular Pressure (IOP) Increase

Prolonged use of corticosteroids may result in glaucoma with damage to the optic nerve, defects in visual acuity and fields of vision. Steroids should be used with caution in the presence of glaucoma. If this product is used for 10 days or longer, intraocular pressure should be monitored.

5.2 Cataracts

Use of corticosteroids may result in posterior subcapsular cataract formation.

5.3 Delayed Healing

The use of steroids after cataract surgery may delay healing and increase the incidence of bleb formation. In those diseases causing thinning of the cornea or sclera, perforations have been known to occur with the use of topical steroids. The initial prescription and renewal of the medication order should be made by a physician only after examination of the patient with the aid of magnification such as slit lamp biomicroscopy and, where appropriate, fluorescein staining.

5.4 Bacterial Infections

Prolonged use of corticosteroids may suppress the host response and thus increase the hazard of secondary ocular infections. In acute purulent conditions of the eye, steroids may mask infection or enhance existing infection.

5.5 Viral Infections

Employment of a corticosteroid medication in the treatment of patients with a history of herpes simplex requires great caution. Use of ocular steroids may prolong the course and may exacerbate the severity of many viral infections of the eye (including herpes simplex).

5.6 Fungal Infections

Fungal infections of the cornea are particularly prone to develop coincidentally with long-term local steroid application. Fungus invasion must be considered in any persistent corneal ulceration where a steroid has been used or is in use. Fungal cultures should be taken when appropriate.

5.7 Contact Lens Wear

Contact lenses should not be worn when the eyes are inflamed.

6 ADVERSE REACTIONS

Because clinical trials are conducted under widely varying conditions, adverse reaction rates observed in the clinical trials of a drug cannot be directly compared to rates in the clinical trials of another drug and may not reflect the rates observed in practice.

Adverse reactions associated with ophthalmic steroids include elevated intraocular pressure, which may be associated with infrequent optic nerve damage, visual acuity and field defects, posterior subcapsular cataract formation, delayed wound healing and secondary ocular infection from pathogens including herpes simplex, and perforation of the globe where there is thinning of the cornea or sclera.

There were no treatment-emergent adverse drug reactions that occurred in more than 1% of subjects in the three times daily group compared to vehicle.

8 USE IN SPECIFIC POPULATIONS

8.1 Pregnancy

Risk Summary

There are no adequate and well controlled studies with loteprednol etabonate in pregnant women.

Loteprednol etabonate produced teratogenicity at clinically relevant doses in the rabbit and rat when administered orally during pregnancy. Loteprednol etabonate produced malformations when administered orally to pregnant rabbits at doses 4.2 times the recommended human ophthalmic dose (RHOD) and to pregnant rats at doses 106 times the RHOD. In pregnant rats receiving oral doses of loteprednol etabonate during the period equivalent to the last trimester of pregnancy through lactation in humans, survival of offspring was reduced at doses 10.6 times the RHOD. Maternal toxicity was observed in rats at doses 1066 times the RHOD, and a maternal no observed adverse effect level (NOAEL) was established at 106 times the RHOD.

The background risk of major birth defects and miscarriage for the indicated population is unknown. However, the background risk in the U.S. general population of major birth defects is 2 to 4%, and of miscarriage is 15 to 20%, of clinically recognized pregnancies.

Data

Animal Data

Embryofetal studies were conducted in pregnant rabbits administered loteprednol etabonate by oral gavage on gestation days 6 to 18, to target the period of organogenesis. Loteprednol etabonate produced fetal malformations at 0.1 mg/kg (4.2 times the recommended human ophthalmic dose (RHOD) based on body surface area, assuming 100% absorption). Spina bifida (including meningocele) was observed at 0.1 mg/kg, and exencephaly and craniofacial malformations were observed at 0.4 mg/kg (17 times the RHOD). At 3 mg/kg (128 times the RHOD), loteprednol etabonate was associated with increased incidences of abnormal left common carotid artery, limb flexures, umbilical hernia, scoliosis, and delayed ossification. Abortion and embryofetal lethality (resorption) occurred at 6 mg/kg (256 times the RHOD). A NOAEL for developmental toxicity was not established in this study. The NOAEL for maternal toxicity in rabbits was 3 mg/kg/day.

Embryofetal studies were conducted in pregnant rats administered loteprednol etabonate by oral gavage on gestation days 6 to 15, to target the period of organogenesis. Loteprednol etabonate produced fetal malformations, including absent innominate artery at 5 mg/kg (106 times the RHOD); and cleft palate, agnathia, cardiovascular defects, umbilical hernia, decreased fetal body weight and decreased skeletal ossification at 50 mg/kg (1066 times the RHOD). Embryofetal lethality (resorption) was observed at 100 mg/kg (2133 times the RHOD). The NOAEL for developmental toxicity in rats was 0.5 mg/kg (10.6 times the RHOD). Loteprednol etabonate was maternally toxic (reduced body weight gain) at 50 mg/kg/day. The NOAEL for maternal toxicity was 5 mg/kg.

A peri-/postnatal study was conducted in rats administered loteprednol etabonate by oral gavage from gestation day 15 (start of fetal period) to postnatal day 21 (the end of lactation period). At 0.5 mg/kg (10.6 times the clinical dose), reduced survival was observed in live-born offspring. Doses \geq 5 mg/kg (106 times the RHOD) caused umbilical hernia/incomplete gastrointestinal tract. Doses \geq 50 mg/kg (1066 times the RHOD) produced maternal toxicity (reduced body weight gain, death), decreased number of live-born offspring, decreased birth weight, and delays in postnatal development. A developmental NOAEL was not established in this study. The NOAEL for maternal toxicity was 5 mg/kg.

8.2 Lactation

There are no data on the presence of loteprednol etabonate in human milk, the effects on the breastfed infant, or the effects on milk production. The developmental and health benefits of breastfeeding should be considered, along with the mother's clinical need for LOTEMAX[®] SM and any potential adverse effects on the breastfed infant from LOTEMAX[®] SM.

8.4 Pediatric Use

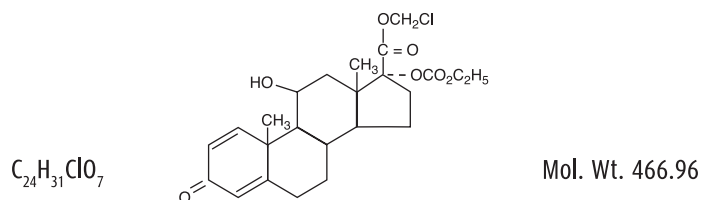
Safety and effectiveness of LOTEMAX[®] SM in pediatric patients have not been established.

8.5 Geriatric Use

No overall differences in safety and effectiveness have been observed between elderly and younger patients.

11 DESCRIPTION

LOTEMAX[®] SM (loteprednol etabonate ophthalmic gel) 0.38% contains a sterile, topical corticosteroid for ophthalmic use. Loteprednol etabonate is a white to off-white powder. Loteprednol etabonate is represented by the following structural formula:



Chemical Name:
chloromethyl 17 α -[(ethoxycarbonyl)oxy]-11 β -hydroxy-3-oxoandrost-1,4-diene-17 β -carboxylate

Each gram contains:

- Active: loteprednol etabonate 3.8 mg (0.38%);
- Inactives: boric acid, edetate disodium dihydrate, glycerin, hypromellose, poloxamer, polycarboxophil, propylene glycol, sodium chloride, water for injection, and sodium hydroxide to adjust to a pH of between 6 and 7.
- Preservative: benzalkonium chloride 0.003%

12 CLINICAL PHARMACOLOGY

12.1 Mechanism of Action

Loteprednol etabonate is a corticosteroid. Corticosteroids have been shown to inhibit the inflammatory response to a variety of inciting agents. They inhibit the edema, fibrin deposition, capillary dilation, leukocyte migration, capillary proliferation, fibroblast proliferation, deposition of collagen, and scar formation associated with inflammation. While glucocorticoids are known to bind to and activate the glucocorticoid receptor, the molecular mechanisms involved in glucocorticoid/glucocorticoid receptor-dependent modulation of inflammation are not clearly established. However, corticosteroids are thought to inhibit prostaglandin production through several independent mechanisms.

12.3 Pharmacokinetics

The pharmacokinetic exposure to loteprednol etabonate following topical bilateral ocular administration of one drop three times daily of LOTEMAX[®] SM for up to two weeks (Day 15) was evaluated in 18 healthy adult subjects. Plasma concentrations of loteprednol etabonate were analyzed using a validated LC/MS/MS method and the lower limit of quantitation for loteprednol etabonate was 0.05 ng/mL. The mean (\pm SD) C_{max} values for loteprednol etabonate in plasma were 0.13 (\pm 0.06) ng/mL on Day 1 after a single dose and 0.16 (\pm 0.06) ng/mL after the last dose on Day 15 of the study. The mean (\pm SD) AUC_t values for loteprednol etabonate in plasma were 0.15 (\pm 0.15) hr•ng/mL on Day 1 after a single dose and 0.35 (\pm 0.32) hr•ng/mL after the last dose on Day 15.

13 NONCLINICAL TOXICOLOGY

13.1 Carcinogenesis, Mutagenesis, Impairment of Fertility

Long-term animal studies have not been conducted to evaluate the carcinogenic potential of loteprednol etabonate. Loteprednol etabonate was not genotoxic in vitro in the Ames test, the mouse lymphoma tk assay, or in the chromosomal aberration test in human lymphocytes, or in vivo in the mouse micronucleus assay. Treatment of male and female rats with 25 mg/kg/day of loteprednol etabonate (533 times the RHOD based on body surface area, assuming 100% absorption) prior to and during mating caused preimplantation loss and decreased the number of live fetuses/live births. The NOAEL for fertility in rats was 5 mg/kg/day (106 times the RHOD).

14 CLINICAL STUDIES

In two randomized, multicenter, double-masked, parallel group, vehicle-controlled trials in patients who underwent cataract extraction with intraocular lens implantation, LOTEMAX[®] SM administered three times daily to the affected eye beginning the day after cataract surgery was more effective compared to its vehicle in resolving anterior chamber inflammation and pain following surgery. In these studies, LOTEMAX[®] SM had statistically significantly higher rates of subjects with complete clearing of anterior chamber cells and of subjects who were pain free at post-operative Day 8 compared to vehicle. Results are shown in the following table.

Proportion of Subjects with Complete Clearing of Anterior Chamber Cells and Proportion of Subjects with Complete Resolution of Pain at Post-Operative Day 8.

Outcome	Study 1			Study 2		
	LOTEMAX [®] SM N=171 n (%)	Vehicle N=172 n (%)	Difference (95 CI) %	LOTEMAX [®] SM N=200 n (%)	Vehicle N=199 n (%)	Difference (95% CI) %
Cells	49 (29%)	16 (9%)	19 (11, 27)	61 (31%)	40 (20%)	10 (2, 19)
Pain	125 (73%)	82 (48%)	25 (15, 35)	151 (76%)	99 (50%)	26 (17, 35)

16 HOW SUPPLIED/STORAGE AND HANDLING

LOTEMAX[®] SM (loteprednol etabonate ophthalmic gel) 0.38% is a sterile ophthalmic submicron gel supplied in a white low-density polyethylene plastic bottle with a white controlled drop tip and a pink polypropylene cap in the following size: 5 g in a 10 mL bottle (NDC 24208-507-07)

Use only if imprinted neckband is intact.

Storage: Store upright at 15° to 25°C (59° to 77°F). After opening, LOTEMAX[®] SM can be used until the expiration date on the bottle.

17 PATIENT COUNSELING INFORMATION

Administration

Invert closed bottle and shake once to fill tip before instilling drops.

Risk of Contamination

Advise patients not to allow the dropper tip to touch any surface, as this may contaminate the gel.

Contact Lens Wear

Advise patients contact lenses should not be worn when the eyes are inflamed.

Risk of Secondary Infection

Advise the patient to consult a physician if pain develops, redness, itching or inflammation becomes aggravated.

Distributed by: Bausch + Lomb, a division of Bausch Health US, LLC, Bridgewater, NJ 08807 USA

Manufactured by: Bausch & Lomb Incorporated, Tampa, FL 33637 USA

U.S. Patent Number: 10,596,107

LOTEMAX is a trademark of Bausch & Lomb Incorporated or its affiliates.

© 2020 Bausch & Lomb Incorporated or its affiliates

9669601 (Folded)

9669701 (Flat)

REF-LSM-0113